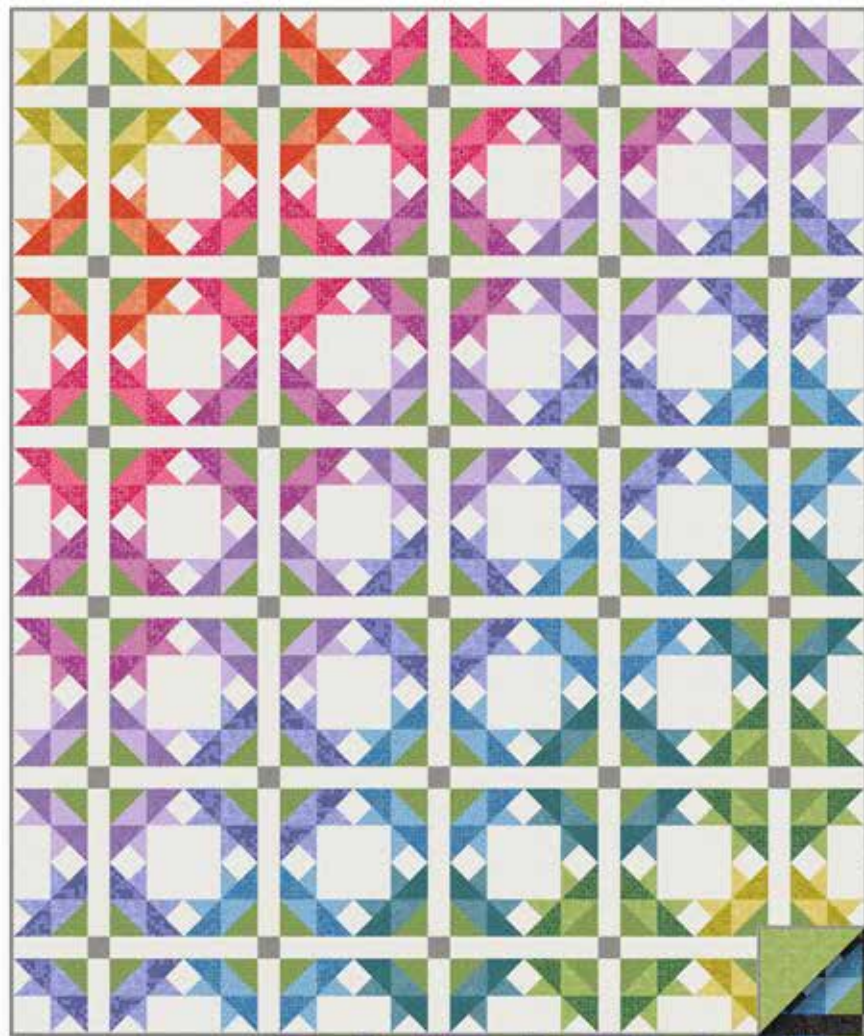


Country Fresh

SARAH MAXWELL OF DESIGNS BY SARAH J.



Country Flowers Quilt
designed by: **Sarah J. Maxwell**
Quilt Size: **57½" x 69"**
Skill Level: **Advanced Beginner**



Country Flowers

Introducing Andover Fabrics new collection: **Country Fresh** by Sarah J. Maxwell

Quilt designed by Sarah J. Maxwell

Quilt finishes 57½" x 69"

A subtle rainbow progression of colors is the highlight of this restful quilt. The original block contains its own "sashing" for a unique design. Switching the light background fabric for a dark print changes the look entirely.

Cutting Directions

Note: Read assembly directions before cutting patches.

All measurements are cut sizes and include ¼" seam allowances. A fat ¼ is an 18" x 20"-22" cut. WOF designates the width of fabric from selvedge to selvedge (approximately 42" wide).

Cutting for ONE Block:

Light Print:

Cut (2) squares 3¾", cut in half to make 4 half-square triangles
Cut (2) squares 3¾", cut in half diagonally twice to make 8 quarter-square triangles

Medium Print:

Cut (4) squares 3¾", cut in half to make 8 half-square triangles

Fabric S

Cut (2) squares 3¾", cut in half to make 4 half-square triangles

Fabric U (or V for dark quilt)

Cut (4) squares 3"
Cut (4) rectangles 2" x 5½"
Cut (2) squares 3¾", cut in half diagonally twice to make 8 quarter-square triangles

Cutting for entire quilt

Fabrics A & P From each:

Cut (20) squares 3¾", cut in half diagonally to make 40 half-square triangles

Fabrics B & R From each:

Cut (6) squares 3¾", cut in half diagonally to make 12 half-square triangles
Cut (6) squares 3¾", cut in half diagonally twice to make 24 quarter-square triangles

Fabrics C, I & N From each:

Cut (8) squares 3¾", cut in half diagonally to make 16 half-square triangles

Fabrics D & J From each:

Cut (10) squares 3¾", cut in half diagonally to make 20 half-square triangles
Cut (10) squares 3¾", cut in half diagonally twice to make 40 quarter-square triangles

Fabric Requirements

		Yardage	Fabric
Fabric A	blocks	fat ¼	1160-P
Fabric B	blocks	fat ¼	1160-T
Fabric C	blocks	fat ¼	1160-V
Fabric D	blocks	fat ¼	1161-B
Fabric E	corners	fat ¼	1161-E
Fabric F	border	fat ¼	1161-G
Fabric G	blocks	fat ¼	1161-O
Fabric H	blocks	fat ¼	1161-V
Fabric I	blocks	fat ¼	1162-O
Fabric J	blocks	fat ¼	1162-P
Fabric K	blocks	fat ¼	1162-T
Fabric L	blocks	fat ¼	1096-B1
Fabric M	blocks	fat ¼	1096-E1
Fabric N	blocks	fat ¼	1096-G
Fabric O	blocks	fat ¼	1096-P1
Fabric P	blocks	fat ¼	1096-P2
Fabric Q	blocks	fat ¼	1099-B
Fabric R	blocks	fat ¼	1099-E1
Fabric S	blocks	⅝ yard	1099-G
Fabric T	blocks	fat ⅝	1099-C1
*Fabric U	blocks	2½ yards	*1162-L
Binding		⅝ yard	1099-C1 (Lt.) 1160-K (Dk.)
Backing		5 yards	1161-G (Lt.) 1096-P2 (Dk.)

*Substitute Fabric V, 1160-K, for 1162-L in the dark quilt block patches

Note: Yardage is generous to allow for changing the number of blocks in each combination.

Fabrics E & Q From each:

Cut (8) squares 3¾", cut in half diagonally to make 16 half-square triangles
Cut (8) squares 3¾", cut in half diagonally twice to make 32 quarter-square triangles

Fabrics F, G & H From each:

Cut (4) squares 3¾", cut in half diagonally to make 8 half-square triangles
Cut (4) squares 3¾", cut in half diagonally twice to make 16 quarter-square triangles

Fabrics K & M From each:

Cut (12) squares 3¾", cut in half diagonally to make 24 half-square triangles

Country Flowers Quilt

Fabrics L & O From each:

Cut (16) squares $3\frac{3}{8}$ ", cut in half diagonally to make 32 half-square triangles

Fabric S

Cut (60) squares $3\frac{3}{8}$ ", cut in half diagonally to make 120 half-square triangles

Fabric T

Cut (30) squares 2"

Fabric U (Fabric V for dark quilt)

Cut (120) squares 3"

Cut (120) rectangles 2" x $5\frac{1}{2}$ "

Cut (60) squares $3\frac{3}{4}$ ", cut in half diagonally twice to make 240 quarter-square triangles

Binding

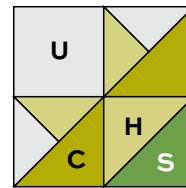
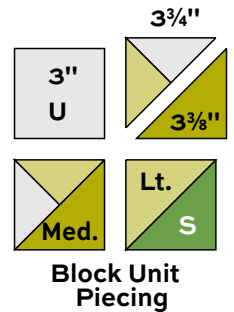
Cut (7) strips $2\frac{1}{2}$ " x WOF for binding

Backing

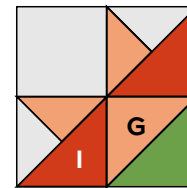
Cut (2) lengths 39" x 89", pieced to fit quilt top with overlap on all sides

Making the Quilt

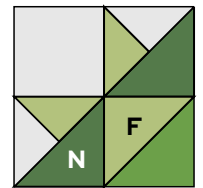
- Yardage is generous for each fat $\frac{1}{4}$ fabric to allow for changing the number of blocks you make in each color combination. For instance, you might wish to make more yellow blocks and fewer purple blocks. Feel free to come up with your own design. Choose either the light quilt with Fabric U in the background patches, or use Fabric V for the dark quilt.
- Refer to the Block Unit Piecing and the Fabric Placement diagrams to make the number of Block Units listed, if you are making the quilt as shown. Make 4 units alike for each block, paying attention to the orientation of the light triangle patches.
- Referring to the Block diagram, arrange 4 units, 4 Fabric U rectangles, and 1 Fabric T square into 3 rows. Stand back to be certain the fabrics are in the correct positions. Join the parts into rows, pressing seam allowances toward the Fabric U rectangles. Join the rows. Make a total of 30 blocks.
- Position the blocks in 6 rows of 5 blocks each, noting the diagonal placement of the various color combinations. Look through a camera to be certain all blocks are arranged as you wish. Once you are satisfied, join the blocks into rows, and then join the rows. Press seam allowances between rows in one direction or open.



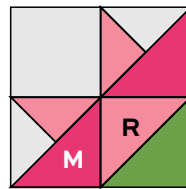
Make 8 for 2 blocks



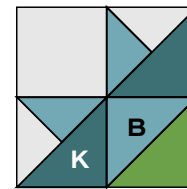
Make 8 for 2 blocks



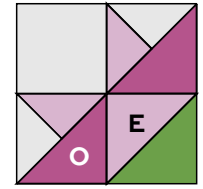
Make 8 for 2 blocks



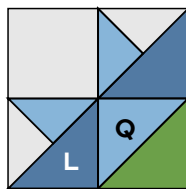
Make 12 for 3 blocks



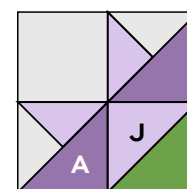
Make 12 for 3 blocks



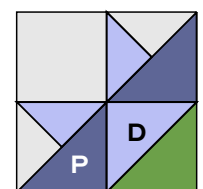
Make 16 for 4 blocks



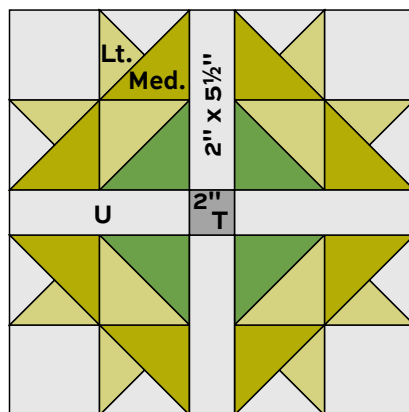
Make 16 for 4 blocks



Make 20 for 5 blocks



Make 20 for 5 blocks



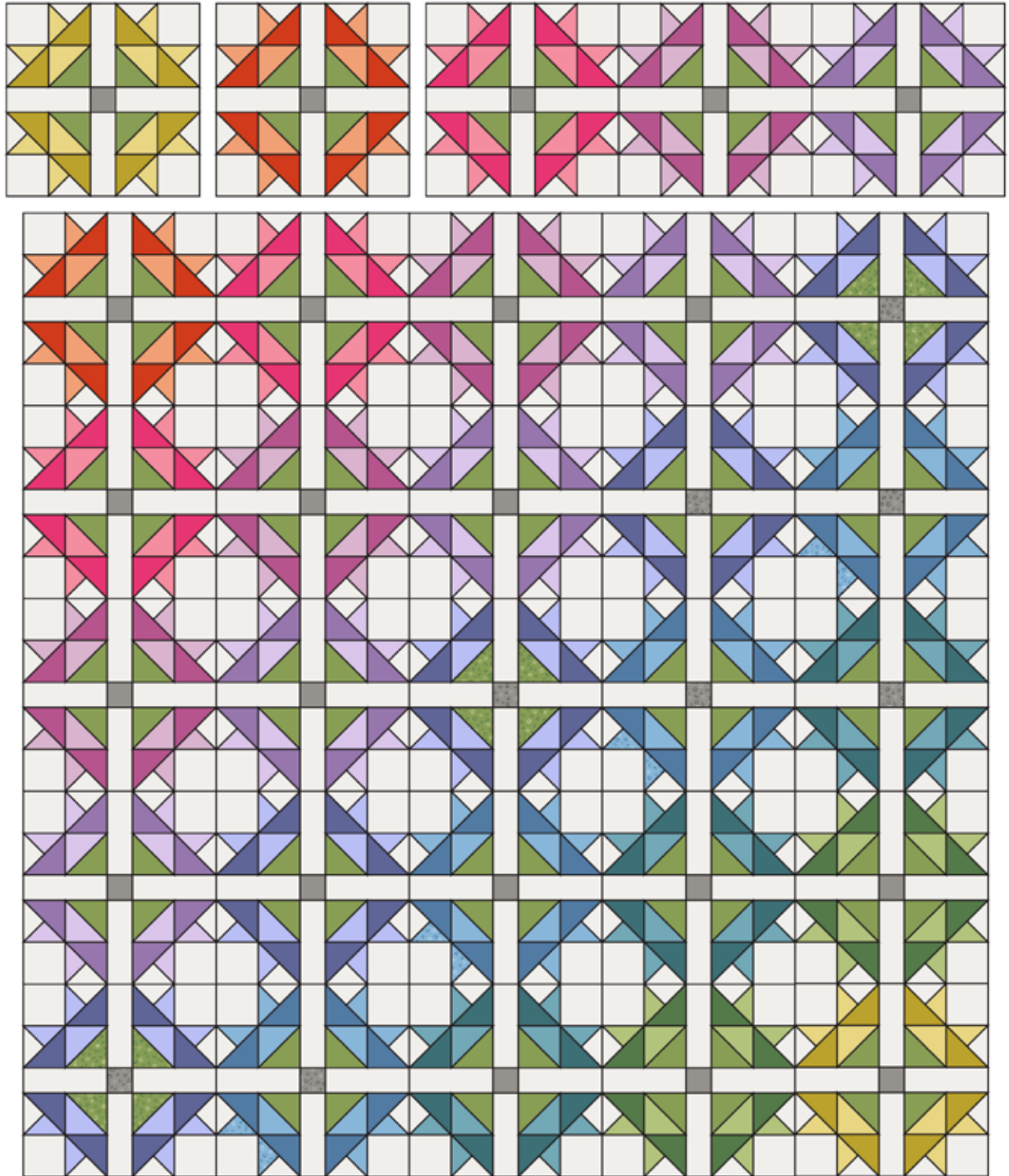
Block - Make 30

Fabric Placement

Country Flowers Quilt

Finishing the Quilt

5. Layer the quilt with batting and backing and baste. Quilt in the ditch around patches. Quilt the Fabric U patches as you wish. Or, quilt an overall pattern. Bind to finish the quilt.



Quilt Assembly

Country Fresh

SARAH MAXWELL OF DESIGNS BY SARAH J.



1096-B1



1096-E1



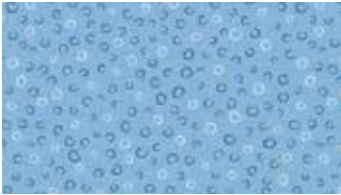
1096-G



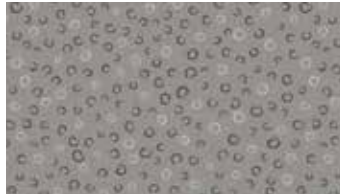
1096-P1



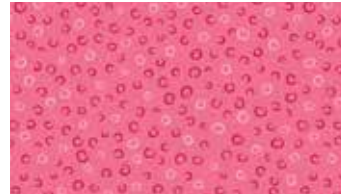
1096-P2



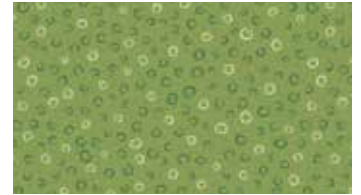
1099-B



1099-C1



1099-E1



1099-G



1160-E



1160-K



1160-P



1160-T



1160-V



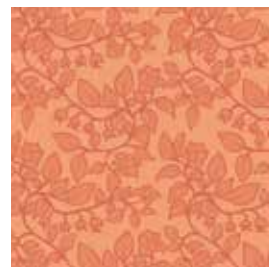
1161-B



1161-E



1161-G



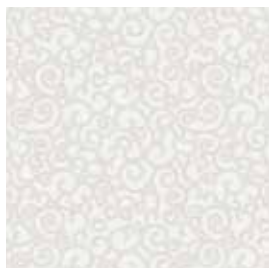
1161-O



1161-V



1162-E



1162-L



1162-O



1162-P



1162-T

All fabrics are used in quilt pattern. Fabrics shown are 50% of actual size.

Free Pattern Download Available

1384 Broadway, 24th Floor, New York, NY 10018

Tel. (800) 223-5678 • andoverfabrics.com